

simply

Changing a Lightbulb Holder



This is a particularly useful skill to have if you wish to upgrade the fittings in a room after decorating, or simply replace an old or broken one. An old dusty lightbulb holder can let down an otherwise decent space.

TOOLS REQUIRED

Step ladder
Small screwdriver
Wire strippers
Insulation tape

Building made simple!

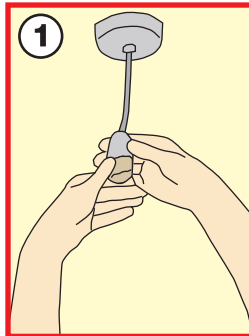
simply

Changing a Lightbulb Holder

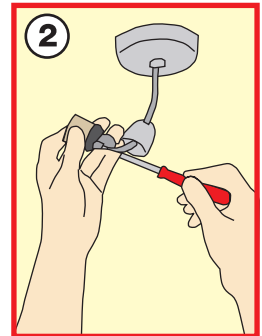
IMPORTANT

Before starting on any work make sure electricity is switched off at DB board.

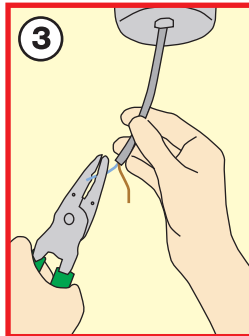
Unscrew the top section of the bulb holder to expose the two connecting wires. These wires will be held in place by screws.



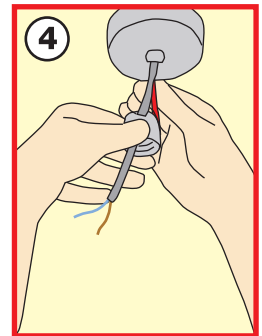
Undo the two screws to release the wires and to remove the damaged bulb holder. The bulb holder will then slide down. You will notice that the ends of the wires have become brittle, due to the heat of the bulb over a long period of time.



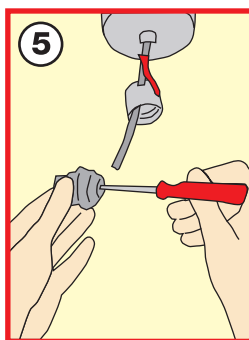
Cut off the last part of the cord by about 25mm. Use a wire stripper to strip the two wires by 10mm at the ends.



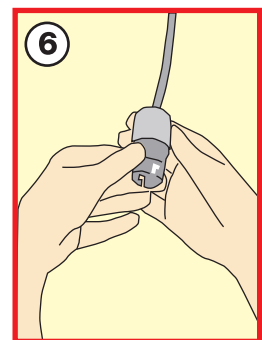
Unscrew the top section of the new bulb holder and slide this over the wires. Then, use a strip of tape to hold the top section in place and stop it from sliding down, until you have connected the wires to the main body of the new bulb holder.



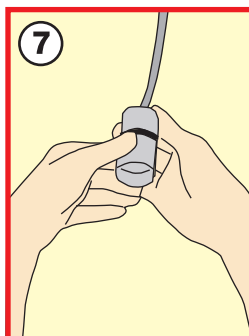
Undo the screws of the new bulb holder, insert the wires and tighten the screws, one at a time. It does not matter which side you put the colour coded wires into the bulb holder.



Remove the tape to release the top part of the bulb holder, screw it to the main body of the holder.



Screw the retaining ring back on to the holder. This allows your light bulb to have surrounded support once inserted. You are now ready to fit in a light bulb.



simply 



**SHOULD YOU HAVE ANY QUESTIONS,
PLEASE DO NOT HESITATE TO CONTACT
YOUR LOCAL BUILD IT STORE.**

REGIONAL OFFICES

KWAZULU NATAL 031 508 5000	EASTERN CAPE 041 404 5000	WESTERN CAPE 021 550 7300	LOWVELD 013 753 6800
SWAZILAND 013 753 6800	SOUTH RAND 011 821 4000	NORTH RAND 011 203 5300	NAMIBIA 00264 61214201

© 2006 BUILD IT

E & O. E.

Building made simple!