

# simply Fitting Locking Laminate Flooring



Laminate flooring is a great flooring option because you can have the beautiful look of a hardwood floor without all the maintenance. Installing a laminate floor may seem like a daunting task, but with some basic knowledge and a small array of tools, the average homeowner can install a floor in a relatively short amount of time.

#### TOOLS REQUIRED

Scissors or a Knife  
Set Square  
Pencil  
Ruler  
Dust Mask  
Hacksaw or Jigsaw  
(with laminate blade)  
Trim Cutters  
Fitting Wedges or  
Expansion Spacers

# Building made simple!

simply

# Fitting Locking Laminate Flooring

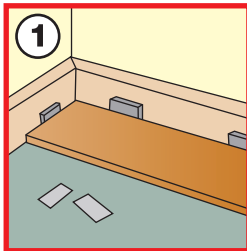
## LOCKING LAMINATE FLOORING

Locking flooring boards have long and short tongues on the sides and the ends that lock together. It is easy to unlock the floor again if you want to move it. Condition the boards before fitting, lay them horizontally in their packing in the room where they are to be used for at least 48 hours.

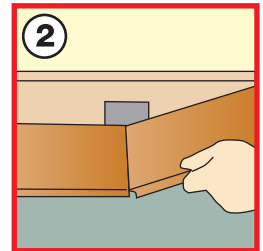
## FITTING LOCKING LAMINATE FLOORING

Laminate flooring expands and contracts naturally, so you need to leave a gap of 10mm between the boards and the skirtingboard when fitting, using fitting wedges or expansion spacers.

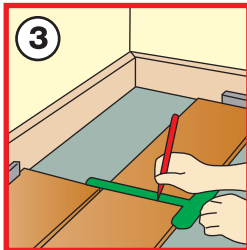
Lay boards lengthways towards the light source. Lay the first board in a left-hand corner over your underlay, the end with the short tongue against the wall. Fit wedges at intervals between the board and the skirting following the manufacturers instructions. Check that board is square with the wall.



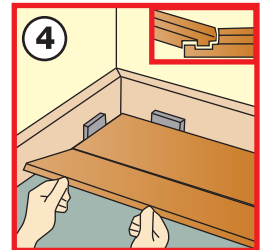
Lay the next board end on, placing the short tongue of the second board into the long tongue of the first at a 30° angle. Lower the board and lock into place. Lay more boards in the same way until you reach the end of the row, where you will probably have to cut a board to make it fit.



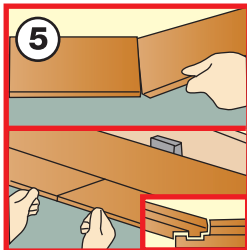
To measure the last board, turn 180° and lay next to previous one. Draw a line across the last board with the end of previous one. Cut and position to complete first row. Joints should be staggered. If the off-cut is between 300mm - 900mm it can be used to start the next row; otherwise, halve a board.



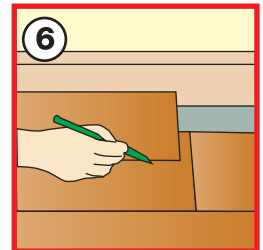
To start the next row, angle cut board against board in previous row, cut end next to wedge. Press forward and fold down at



Place short end of next board at an angle against previous board and fold down, making sure the board is on the locking strip in the previous row. Angle boards by 30° and push against the row in front. When boards are tightly together, push them down.



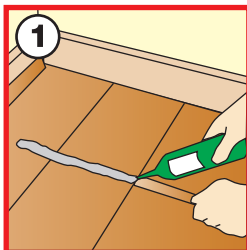
For last row, place a board at a time over the previous row. Place a third board on top with tongue touching the skirting and use the edge to mark cutting line on the board beneath. Cut board and ease into position, remove wedges.



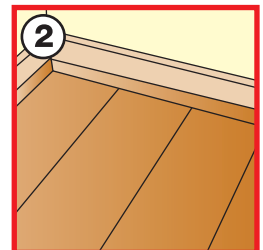
## FLOOR TRIM

Once flooring is laid, you can remove the fitting wedges and cover the gap around the edge of the room with laminate flooring trim, chosen to match floor. The trim should be fixed to the skirting - not floor - with adhesive.

Measure and cut lengths of laminate flooring trim. For neat, professional finish, use trim cutters that cut trim in straight lines or at an angle to fit into a corner.



Apply trim adhesive to back of a length of flooring trim (not base) so that it will stick to the skirting board rather than floor.



Press trim into place and if necessary secure them with some heavy weights, while adhesive dries.

SHOULD YOU HAVE ANY FURTHER QUESTIONS, PLEASE DO NOT HESITATE TO CONTACT YOUR LOCAL BUILD IT STORE.

simply Build it

## REGIONAL OFFICES

<b>KWAZULU NATAL</b> 031 508 5000	<b>EASTERN CAPE</b> 041 404 5000	<b>WESTERN CAPE</b> 021 550 7300	<b>LOWVELD</b> 013 753 6800
<b>SWAZILAND</b> 013 753 6800	<b>SOUTH RAND</b> 011 821 4000	<b>NORTH RAND</b> 011 203 5300	<b>NAMIBIA</b> 00264 61214201

©2006 BUILD IT

E & O. E.

# Building made simple!